

Welcome to

CS 3516:
Computer Networks

Prof. Yanhua Li

Time: 9:00am –9:50am M, T, R, and F
Zoom Lecture
Fall 2020 A-term



Lecture 1: roadmap

1.1 what is the Internet?

“nuts and bolts” view
a service view

what's a protocol?

1.2 network edge

- hosts, access networks, physical media/links

“Fun” internet appliances



IP picture frame
<http://www.ceiva.com/>



Internet refrigerator



Slingbox: watch,
control cable TV remotely



Web-enabled toaster +
weather forecaster



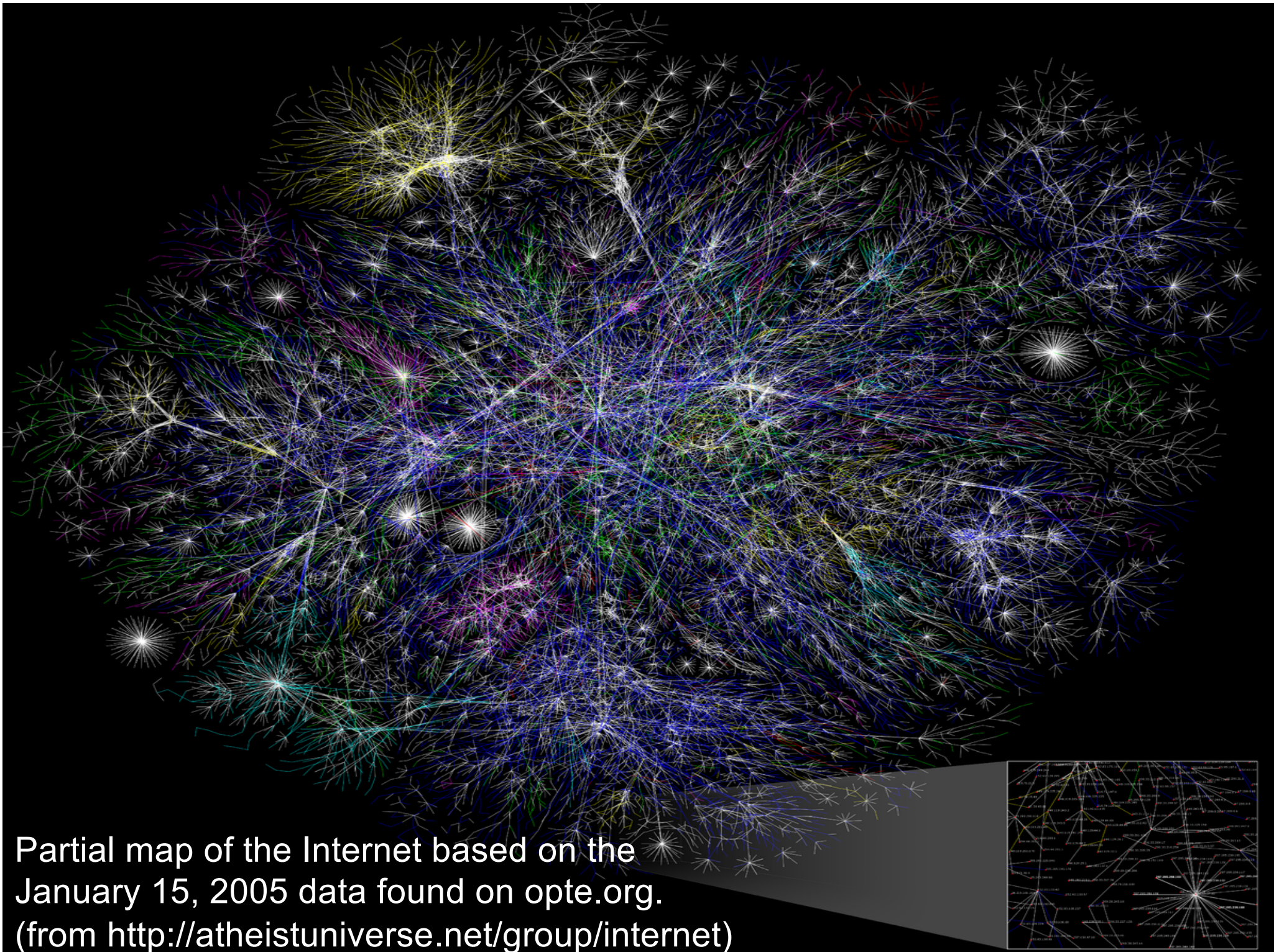
Tweet-a-watt:
monitor energy use



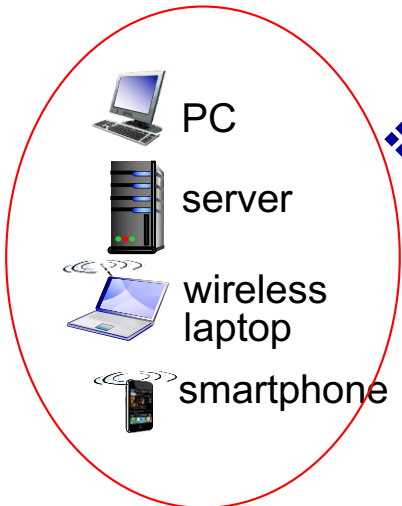
Drone



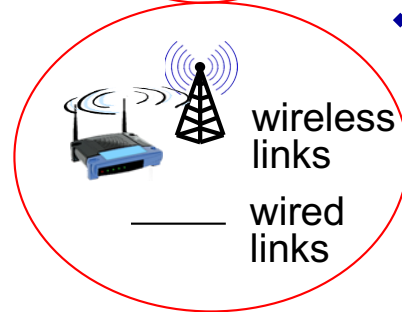
Internet phones



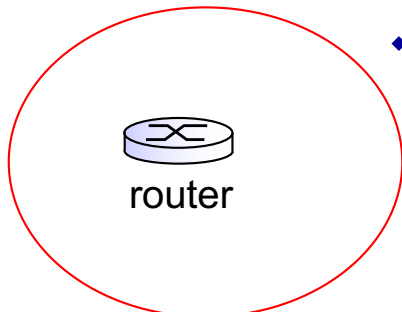
What's the Internet: “nuts and bolts” view



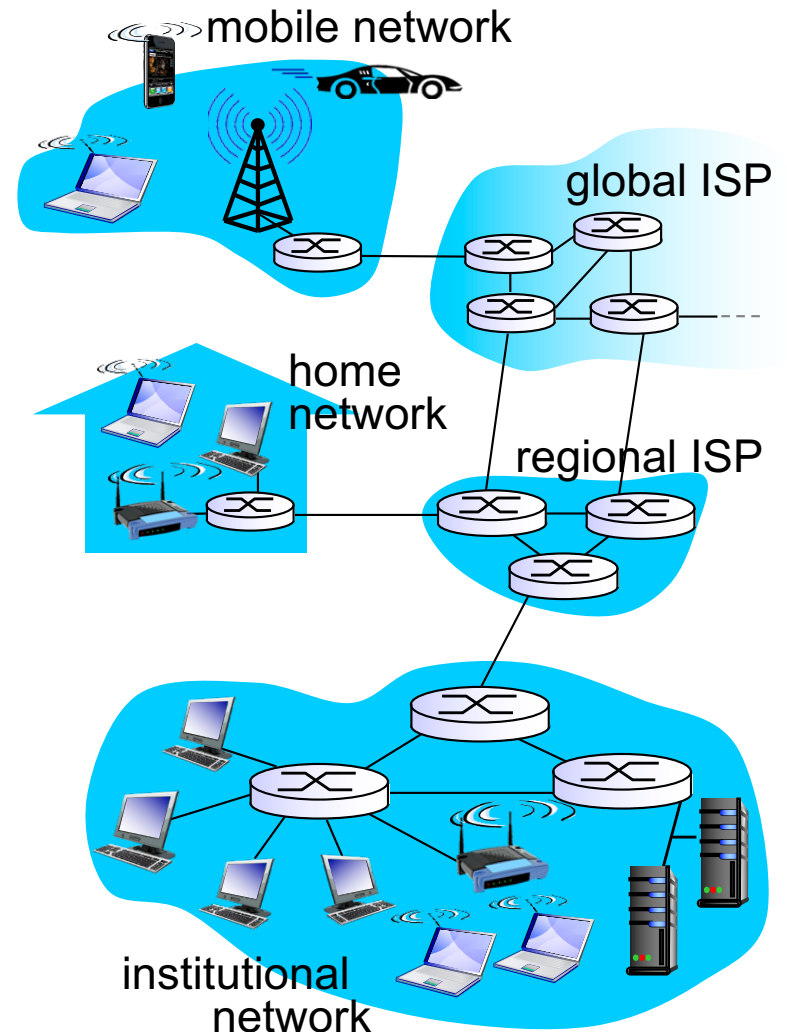
- ❖ millions of connected computing devices:
 - *hosts* = *end systems*
 - running *network apps*



- ❖ *communication links*
 - fiber, copper, radio, satellite
 - transmission rate: *bandwidth*



- ❖ *Packet switches*: forward packets (chunks of data)
 - *routers* and *switches*

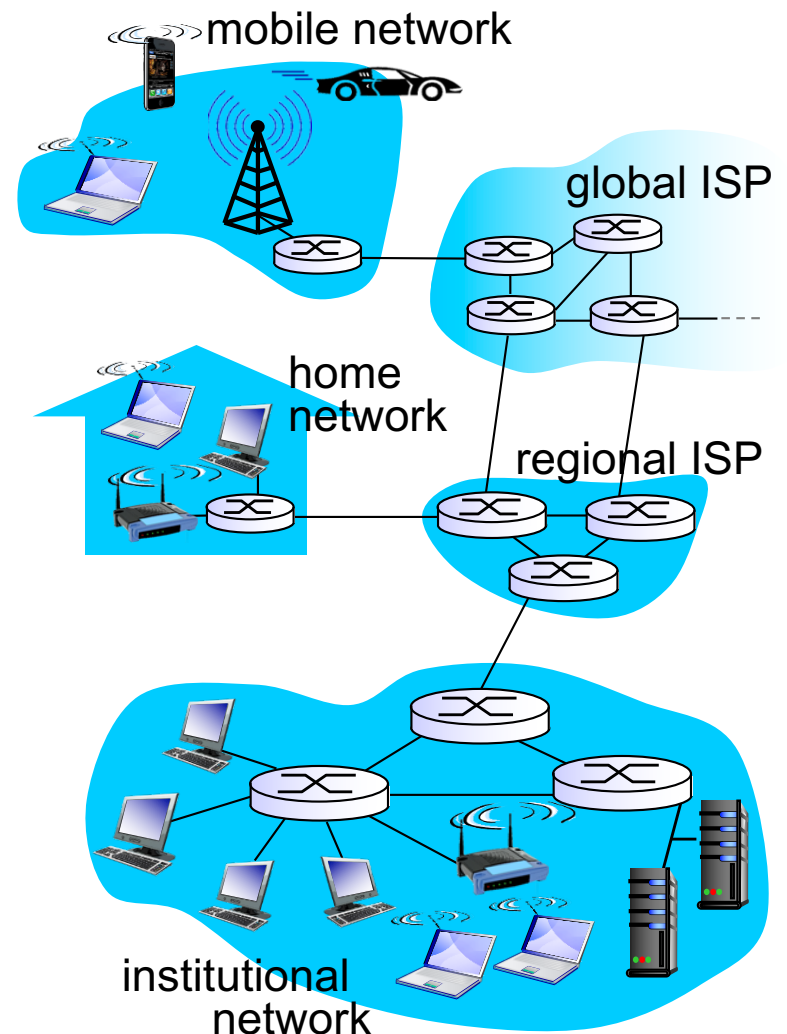


Hardware components.

What's the Internet: “nuts and bolts” view



- ❖ *Internet: “network of networks”*
 - Interconnected ISPs
- ❖ *protocols* control sending, receiving of msgs
 - e.g., TCP, IP, HTTP, Skype, 802.11
- ❖ *Internet standards*
 - RFC: Request for comments
 - IETF: Internet Engineering Task Force – an open international community of network designers



Software components.

Questions?