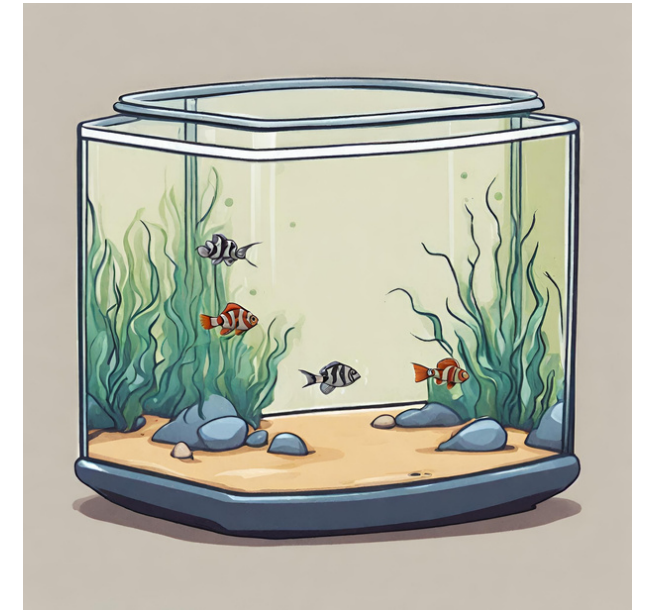
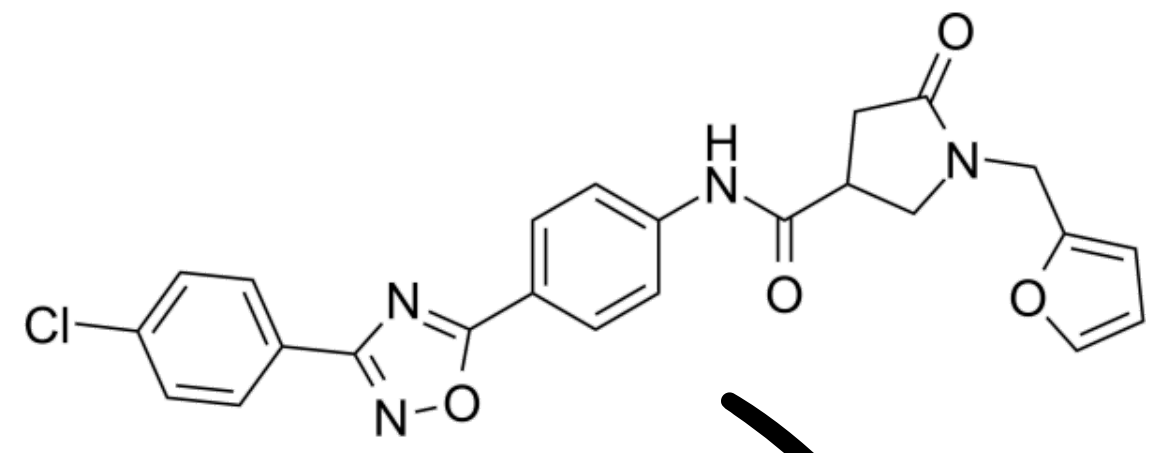
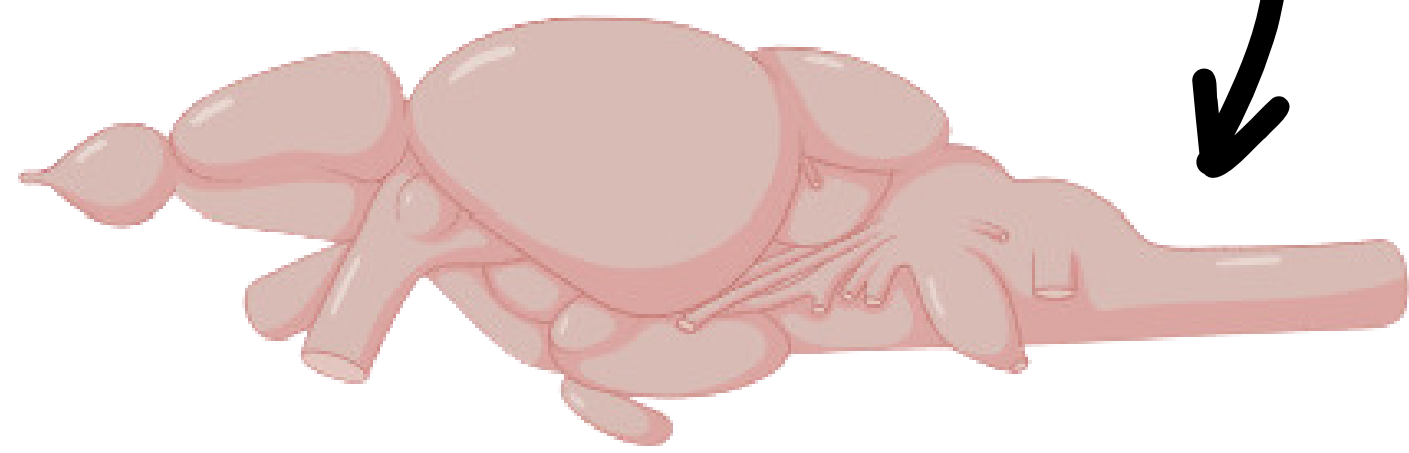




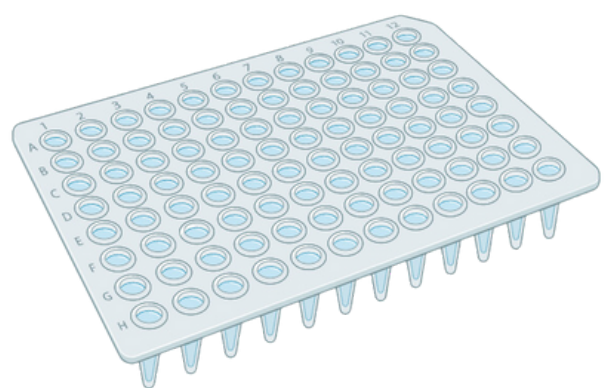
ASD risk gene ARID1B mutated in zebrafish -> led to decreased sociability



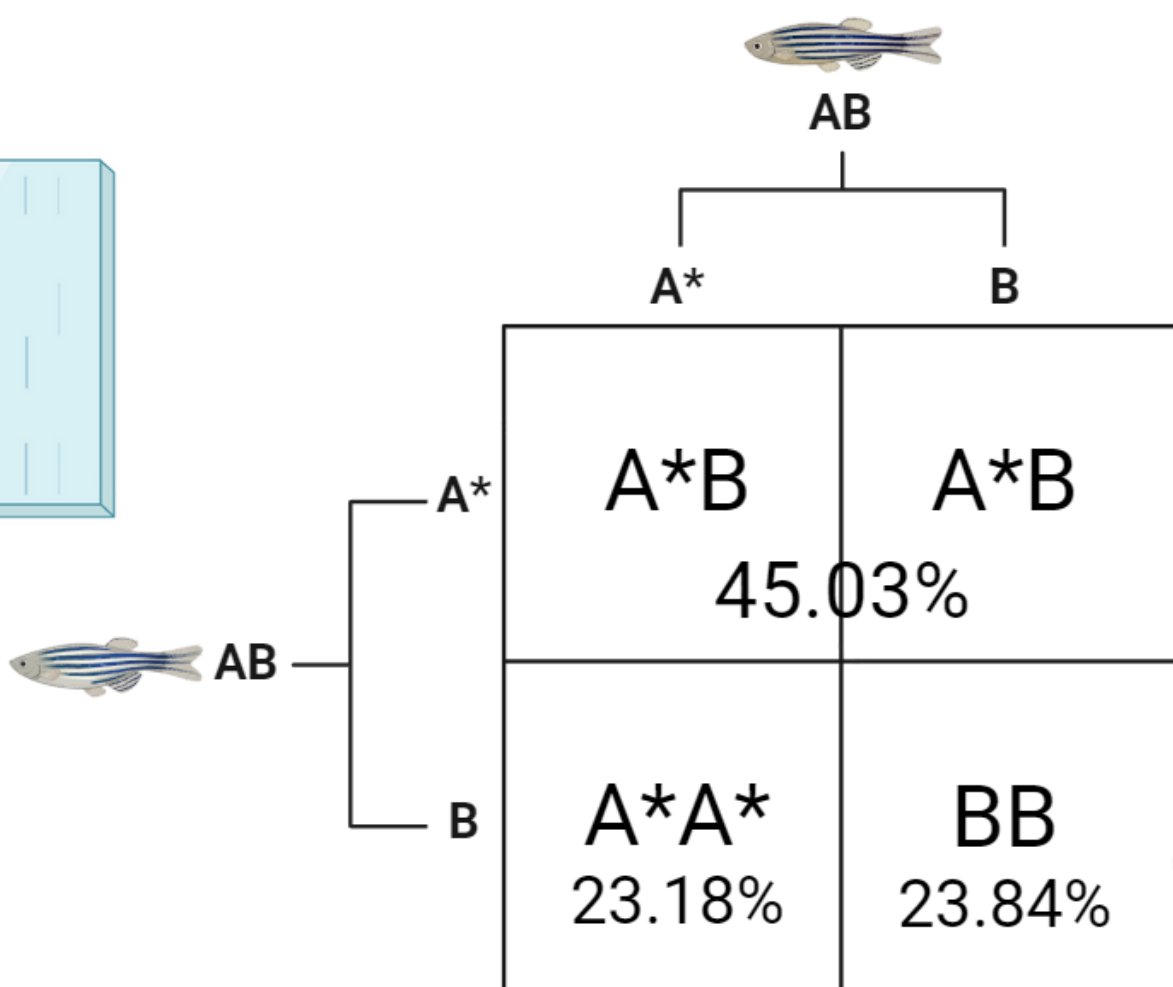
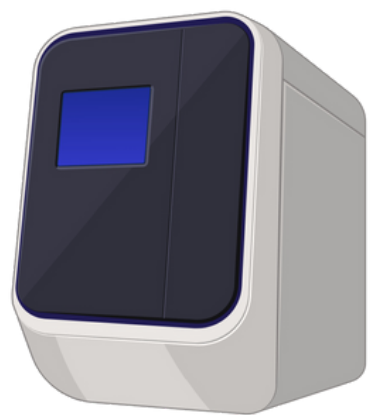
upregulated hormone in ARID1B zebrafish suppressed with hormone antagonist drug



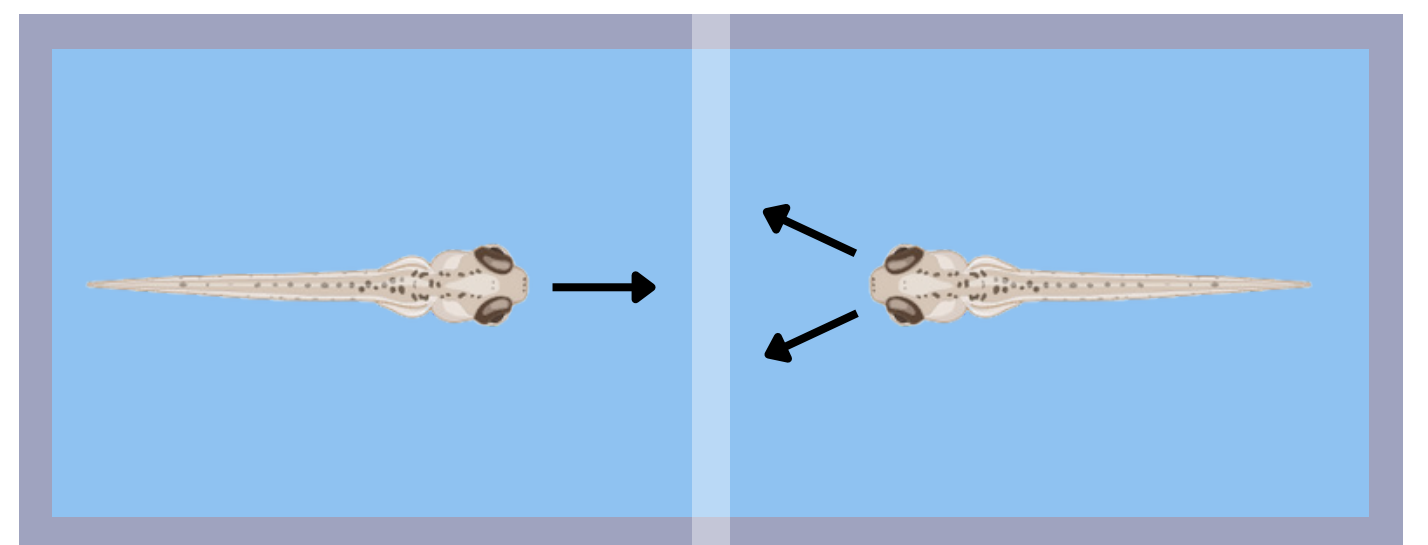
impaired sociability in ASD



PCR run to identify genotypes of fish with mutation (if at all)



sociability of zebrafish measured through # of times approached clear divider



experimental: avg. 4.7 interactions

control: avg. 7.4 interactions