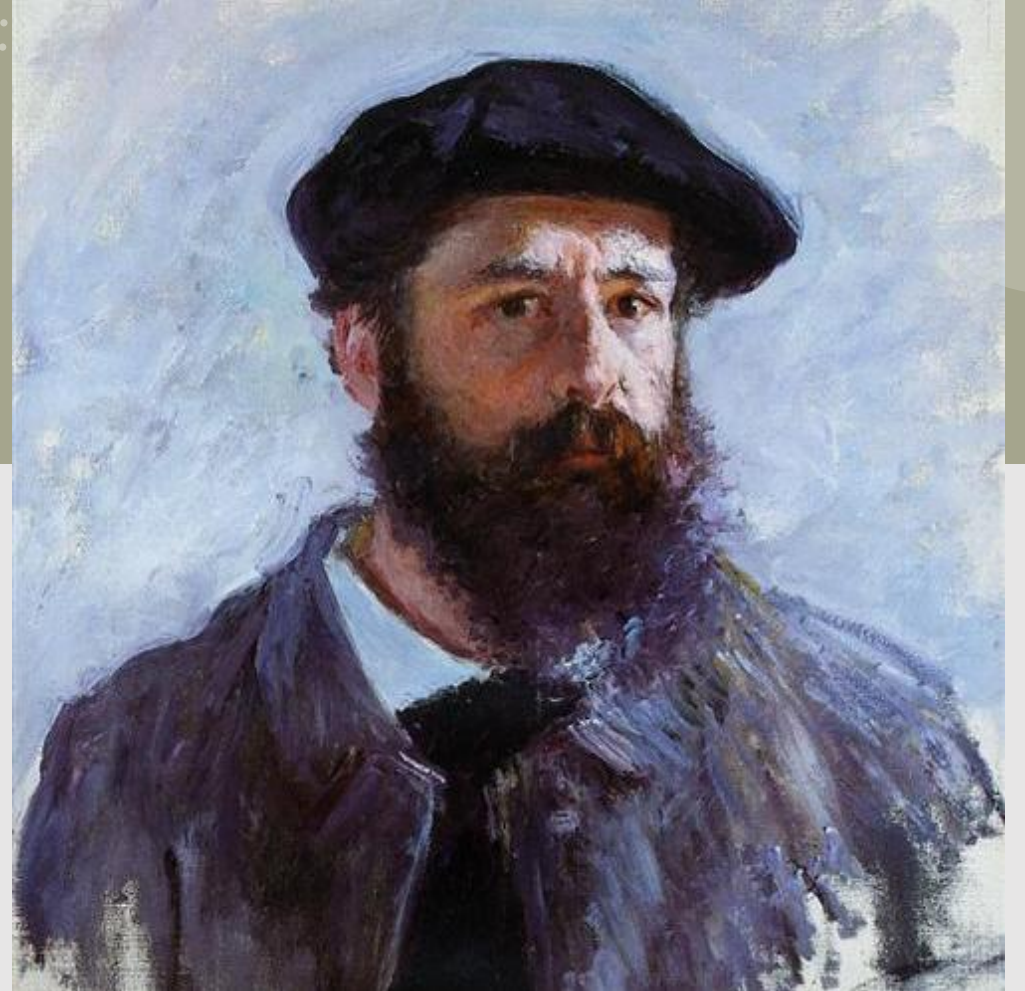


A still life photograph featuring a dark, rounded ceramic vase in the foreground, filled with several pink flowers. Behind it, a dark, shallow bowl sits on a light-colored, textured surface. To the right of the bowl, several pieces of fabric, including a striped cloth and a plain light-colored cloth, are folded. The background is a soft, out-of-focus light gray. The entire image is framed by a light green border with white polka dots in the corners.

Claude Monet

Nichelle

Ou habite Monet?






Le Pont Japonais

Promenade sur la Falaise à Pourville



A reproduction of the painting 'Marine, Expédition au Clair de Lune' by Claude Monet. The scene is a dramatic seascape at night. In the foreground, the dark, silhouetted hull and rigging of a ship are visible on the left. The sea is dark and choppy. In the middle ground, a small, distant figure of a person stands on a rocky outcrop or pier. The sky is filled with dark, swirling clouds, punctuated by bright, glowing patches of light that suggest moonlight breaking through. On the right side, a lighthouse is visible, its light glowing warmly. The overall mood is mysterious and atmospheric, characteristic of the Impressionist style.

Marine, Expédition au Clair de Lune

2025

CLAUDE MONET