

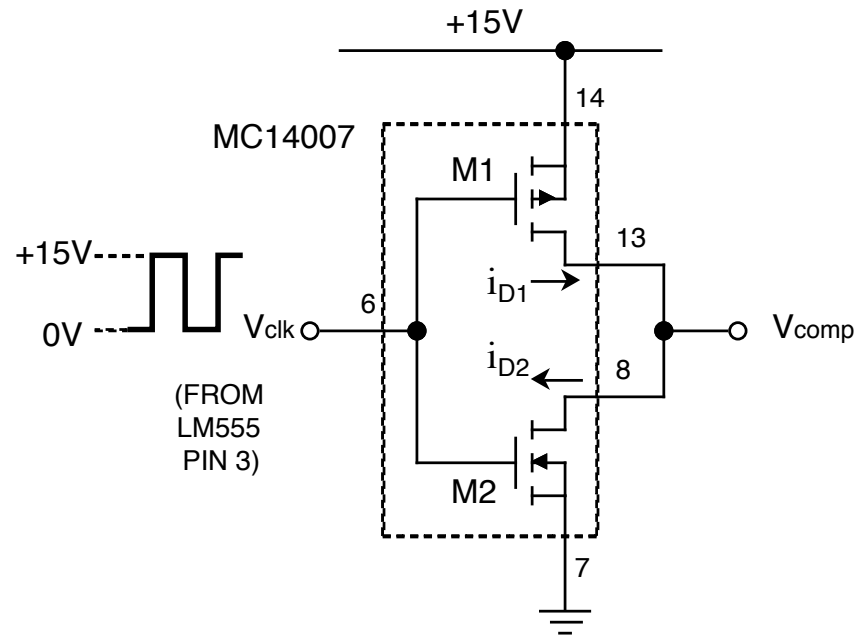
Lab 4 Circuits

CMOS Inverter

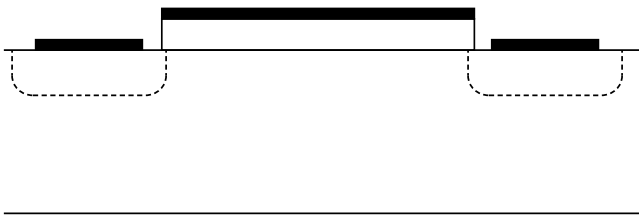
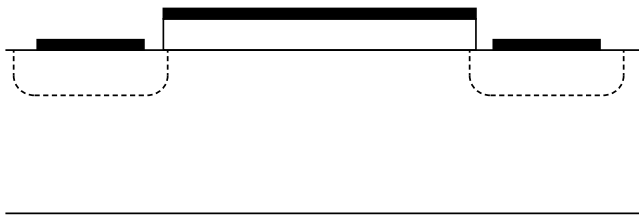
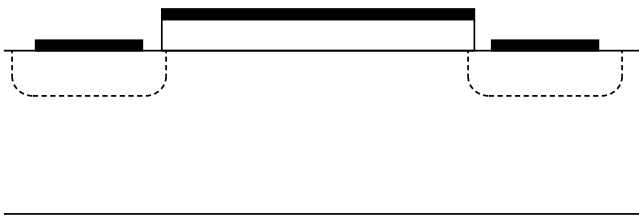
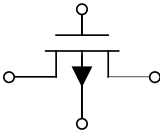
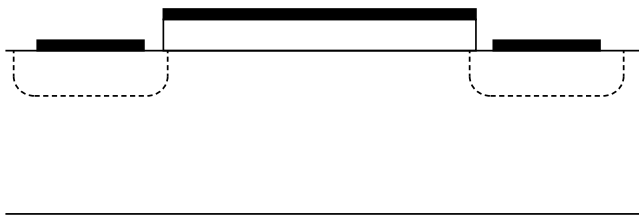
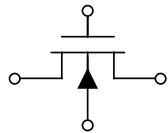
MOSFET Switch (13.1)

Sample-and-Hold

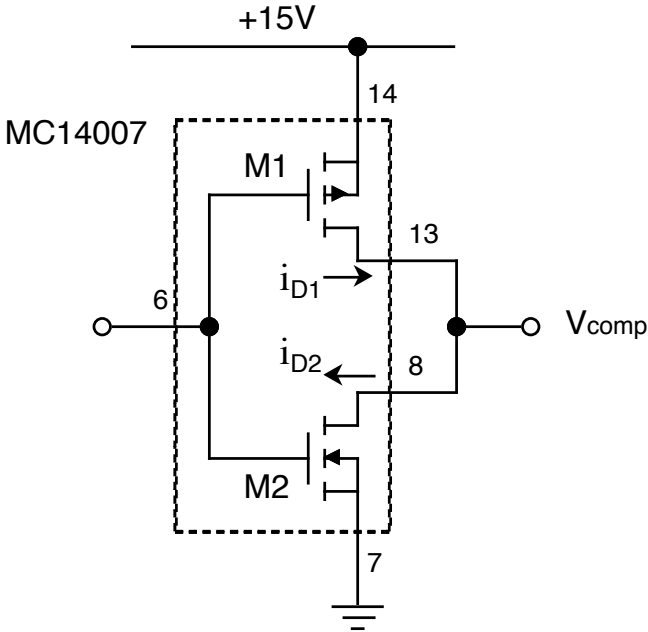
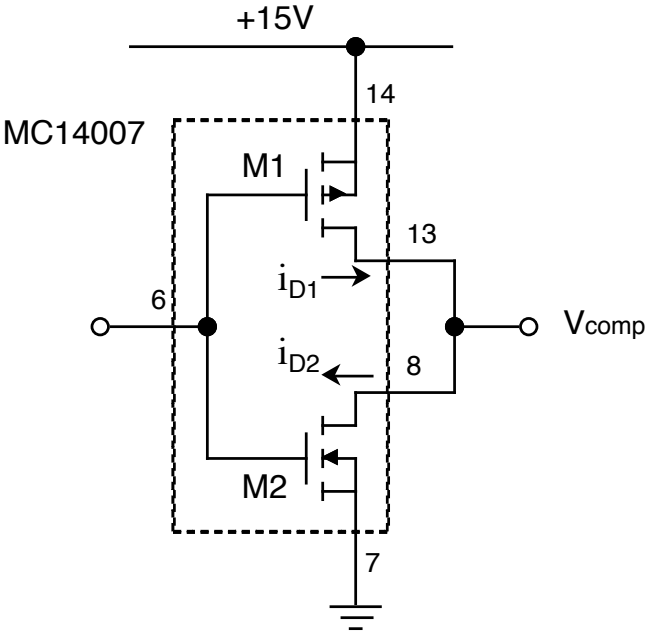
Analog Multiplexer



MOSFET Review

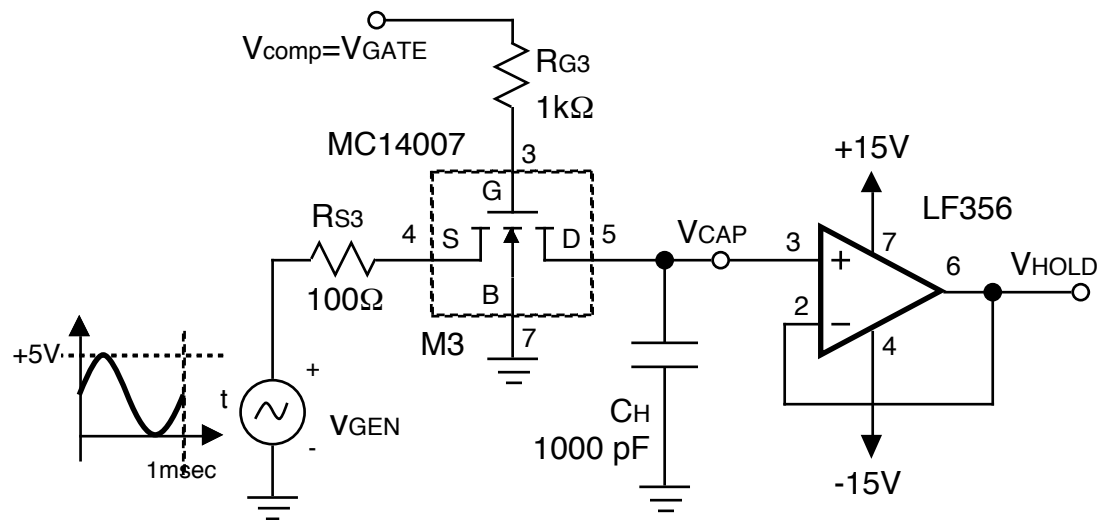


CMOS Inverter

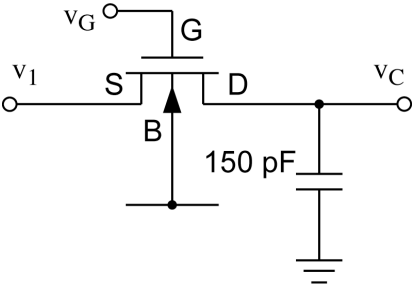
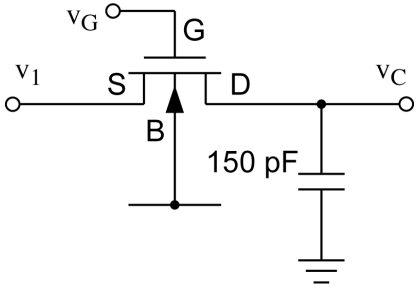


P3. Sample-and-hold

The sample and hold circuit of Figure 4.3 uses one of the MC14007 N-channel MOSFETs as analog switch M3. Note that V_{GEN} is a 1kHz, 5V peak-to-peak sine wave with a +2.5V DC offset: the voltage swings from 0V to +5V. Resistors R_{G3} and R_{S3} are for protection of the analog switch.



Sample-and-Hold Development



P4. Analog Multiplexer

