

The REG Procedure
Model: MODEL1
Dependent Variable: I_highmpg

Number of Observations Read	93
Number of Observations Used	93

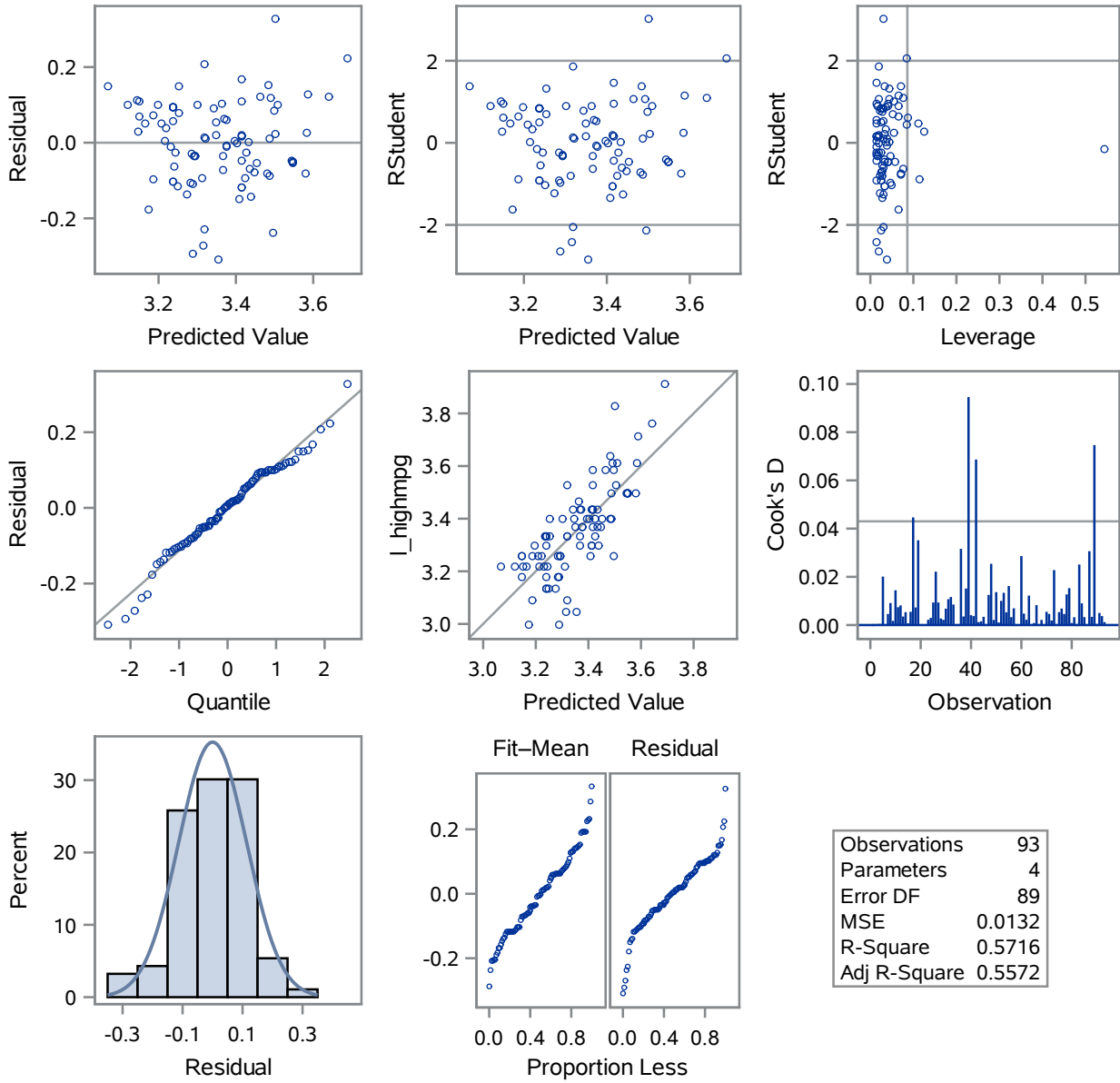
Analysis of Variance					
Source	DF	Sum of Squares	Mean Square	F Value	Pr > F
Model	3	1.57287	0.52429	39.59	<.0001
Error	89	1.17862	0.01324		
Corrected Total	92	2.75148			

Root MSE	0.11508	R-Square	0.5716
Dependent Mean	3.35498	Adj R-Sq	0.5572
Coeff Var	3.43006		

Parameter Estimates					
Variable	DF	Parameter Estimate	Standard Error	t Value	Pr > t
Intercept	1	4.54898	0.24368	18.67	<.0001
I_displace	1	0.02924	0.10079	0.29	0.7724
I_hp	1	-0.35502	0.09037	-3.93	0.0002
RPM	1	0.00009867	0.00003932	2.51	0.0139

The REG Procedure
 Model: MODEL1
 Dependent Variable: I_highmpg

Fit Diagnostics for I_highmpg



The REG Procedure
Model: MODEL1
Dependent Variable: I_highmpg

