

# Maps for Good

Find your way to a better world

Raihan Ahmed, Ila Chakravarthy, Anthea Sun

Advisor: Angela Taricco



## Community Need

- Navigating public spaces presents significant challenges for individuals with disabilities
- Difficult to find amenities – even harder to find accessible amenities
- Existing tools are often limited in scope, lack real-time accuracy, and frequently fail to account for accessibility

## Features & Functions

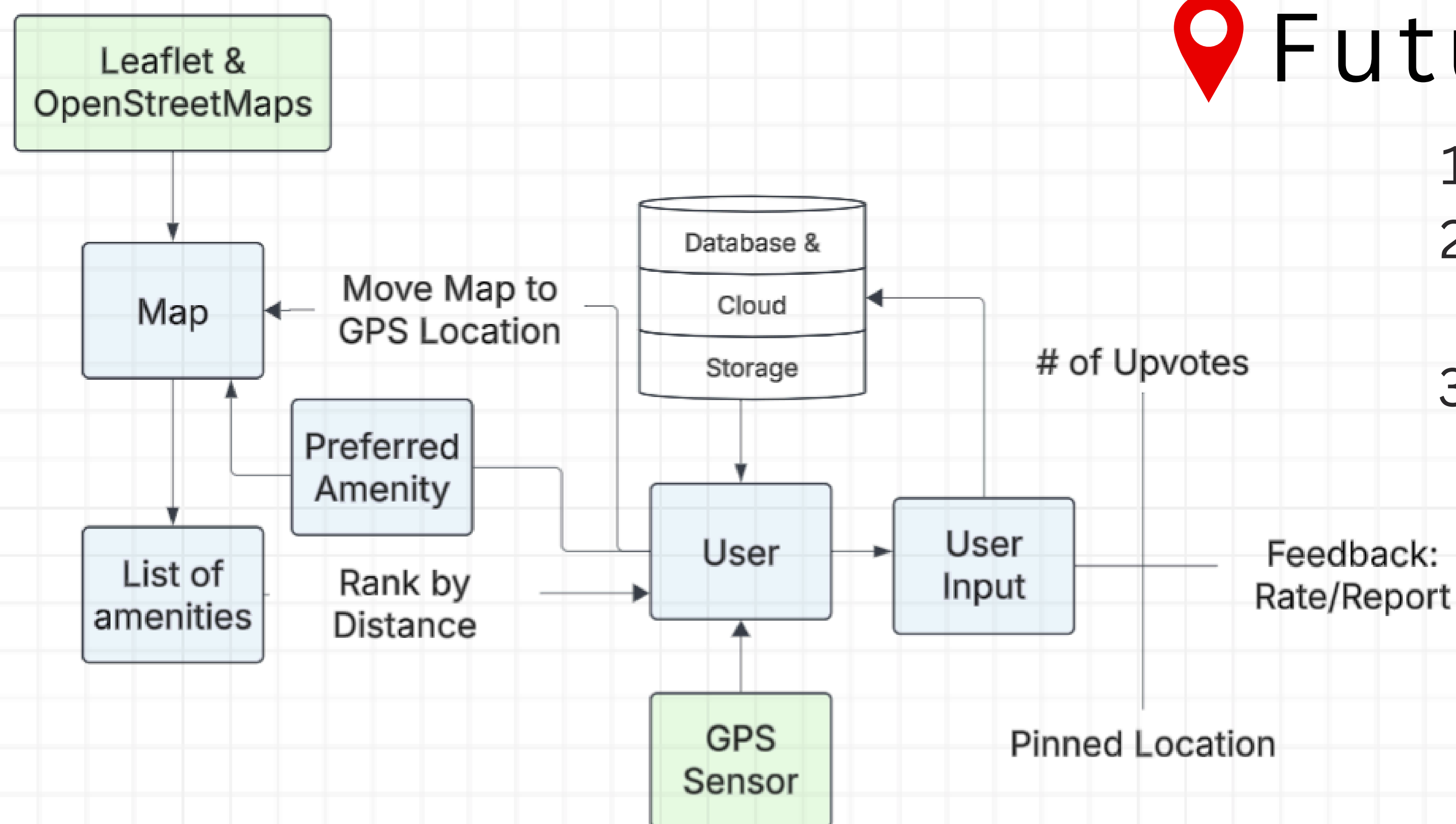
### I. Interactive Map

Pinned locations on the map show available amenities, denoted by amenity icons. Users are also able to provide feedback on locations, ensuring the most up-to-date version of the app.

### II. Location Name & Google Maps Link

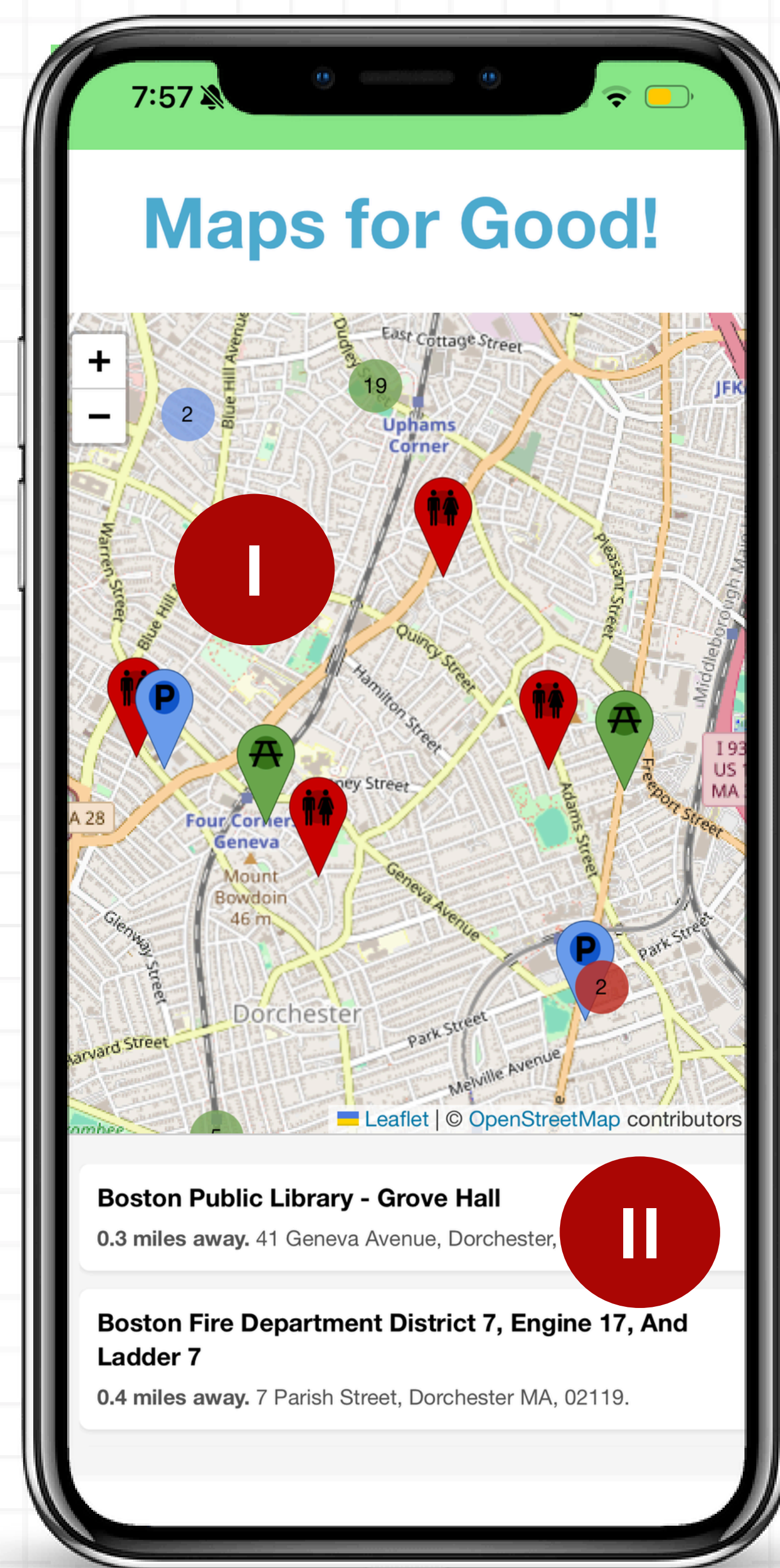
Once clicked, each map pin provides a direct link to Google Maps to allow users to navigate to their selected amenity.

## Architecture



## Target Audience

- Young adults and adults
- People navigating unfamiliar or crowded areas  
→ Especially people affected by a disability



## Future Extensions

1. Time of report
2. Filter by lowest and highest priority
3. Expand to others, such as sidewalks & sidewalk conditions
  - a. Ramps
  - b. Audible crosswalks
  - c. Changing stations



### Contact Us!

rahmed@wpi.edu,  
ichakravarthy@wpi.edu,  
asun@wpi.edu